

THE HORTON FEATURES



# COOL-TECH®

THE OPTIMUM IN CREW AND PATIENT COMFORT.

Horton developed a unique solution to an industry challenge—maximizing the system's cooling ability, while recessing the key components into otherwise unused space.

## THE POWER TO COOL FASTER

Cool-Tech features a powerful 100,000 BTU cooling condenser capacity, the largest in the industry.

## CONDENSER POSITIONING—ANOTHER INNOVATIVE IDEA

We moved the condenser from the front of the module to a recessed pocket on top of the ambulance. This unique design delivers several added benefits, including:

- ADDITIONAL FRONT FACE, BODY SPACE AREA FOR LIGHT BARS, CUSTOM LIGHT PATTERNS, GRAPHICS OR LOGOS
- REDUCED NOISE DISTURBANCE DUE TO THE ELIMINATION OF WIND TURBULENCE
- CONDENSER PROTECTION FROM SALT, MUD, ROCKS, DEBRIS AND TREE BRANCHES

## MONITORS INTEGRATED INTO POWER-TECH BY HORTON™

Cool-Tech is controlled and monitored through our exclusive Intelliplex Power-Tech by Horton™ system, which allows for control of the cooling system in both the cab and patient area. This convenient central control also allows for routine maintenance checks, enhancing technician and operator safety by reducing the need to access the system from the vehicle's roof.

## SMART FANS

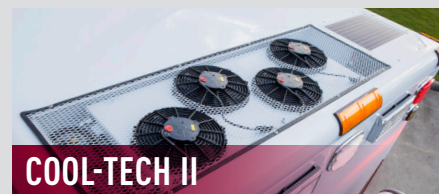
The intelligent Cool-Tech system relays how many fans need to operate based on a sensor that monitors head pressure. The higher the pressure, the greater number of fans that must operate. Additionally, each time Cool-Tech starts, it automatically alternates which fans are used, balancing wear and optimizing performance.

### COOL-TECH MODELS



#### COOL-TECH I

Our base model delivers cool air in all climates, cooling your ambulance quickly and helping to maintain a comfortable interior temperature.



#### COOL-TECH II

A top-mounted solar panel provides a trickle charge to the vehicle's batteries in order to maintain optimum power.



#### COOL-TECH III

This model provides an additional 40,000 BTU single-fan condenser for a selected 110V air conditioning unit. Connect to 110V AC power through the shoreline, allowing the air conditioning to run and keep the interior cool while parked with the engine off.

# THE HORTON DIFFERENCE

All Horton ambulances come standard with the features you know and trust for strength and safety.



## STRENGTH AND SAFETY



### HOPS™ featuring MBrace™

The first ambulance patient compartment safety system that protects in both frontal impacts and rollover events.



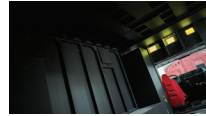
### The Horton Legendary Body™

Engineered and constructed to deliver the ultimate in strength and safety.



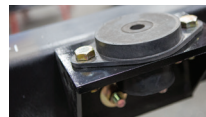
### Tested Beyond the Limits

Designed and built to exceed industry testing standards.



### Horton QuietGuard™

Exclusive sound deadening so crews can perform at their best.



### Horton Vi-Tech™ Mounting System

Superior strength, ensuring body-to-frame integrity.



### HO<sub>2</sub>rton System™

Designed and tested to function virtually failure free.

## DISTINCTION IN EVERY DETAIL

### Horton Advanced Customization

You're the expert on your department's needs, and we're the experts at getting it done.

### Horton Design Culture

You're investing in your future. We're driven to do more for you than most think possible.

### Horton Distinctive Style

Safety, functionality and style aren't mutually exclusive, so you can make your Horton look as good as it performs.

## ADDITIONAL FEATURES

COOL-TECH®

DIRECTIONAL SAFETY LIGHTING

CUSTOM GRAPHICS

POWER-TECH BY HORTON™

CUSTOM RUB-RAIL LIGHTS

CUSTOM INTERIOR

HORTON 360™

CUSTOM BACKLIT FEATURES



## COMPREHENSIVE SUPPORT

Backed by our dealer network, the Horton team and REV Financial Services, we are ready as your first line of defense for your next purchase or when you need support.

### Horton Dealer Network

One-of-a-kind ambulances demand our extraordinarily qualified service and support.

### Horton Comprehensive Coverage

Our warranties deliver confidence and peace of mind.



Contact us at 1-800-282-5113 or scan to find your local dealer  
[HORTONAMBULANCE.COM](http://HORTONAMBULANCE.COM) | [INFO@HORTONAMBULANCE.COM](mailto:INFO@HORTONAMBULANCE.COM)

**Horton**  
STRENGTH & SAFETY IN EVERY DETAIL™