

THE HORTON FEATURES

Horton
STRENGTH & SAFETY IN EVERY DETAIL™

POWER-TECH BY HORTON™

TAKE COMMAND WITH COMPLETE CONTROL

The Power-Tech by Horton electrical system is central command on every Horton ambulance, connecting to critical systems and vehicle diagnostics.

Power-Tech by Horton is an easy-to-use, simple design that connects to critical systems such as lighting, HVAC, the HO₂rtion System™ and Horton 360™, as well as vehicle diagnostics for components like Cool-Tech®. The system features large, robust panels that provide enhanced durability and reliability. Highly customizable, it delivers flexibility and control with a programmable LCD touchscreen, helping to save space on the front console and in the action area.

≡ FULLY PROGRAMMABLE CONTROL

The Power-Tech by Horton electrical system controls a number of functions, including:

- LOAD MANAGEMENT
- SEQUENCED START CIRCUIT ACTIVATION
- ELECTRICAL SYSTEM DIAGNOSTICS
- CLIMATE CONTROL HEAT/AC OPERATION
- INTENSITY CONTROLS FOR PATIENT DOME LIGHTS
- OXYGEN WARNING SYSTEM (HIGH AND LOW PRESSURE)
- ALL WARNING LIGHT FLASHERS AND FLASH PATTERNS
- PATIENT STATUS SYSTEM
- ADDITIONAL FEATURES AVAILABLE

≡ FRONT CREW CONTROL

The front switch panels control the following items: Module Emergency Master, Interior Lights, Exterior Lights, Home, Settings and Maintenance. Additional options can be added.

≡ REAR CREW CONTROL

The rear panel specifically controls patient care functions, including: Oxygen, Vacuum, Interior Lighting, Climate Control, Ventilation, Timer/Stopwatch and Patient Status. You can also review Oxygen Line Pressure and Oxygen Cylinder Pressure.

≡ DIAGNOSTICS

Diagnostics for this electrical system are state of the art, with a built-in capability to self-check each circuit and identify a short or open circuit automatically.

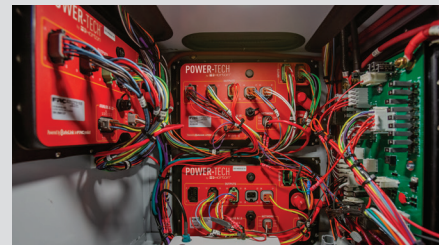
- ELECTRICAL DIAGNOSTICS
- USB PORT FOR FIELD UPGRADABILITY
- INTERCHANGEABLE FRONT AND REAR PANELS
- ABILITY TO EMBED PDF FILES FOR DIAGNOSTICS
- FULL DIAGNOSTIC SUITE
- PLUG-AND-PLAY PANELS DO NOT NEED TO BE REPROGRAMMED WHEN CHANGED



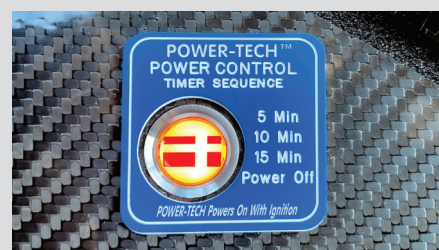
KEY ADVANTAGES



DESIGNED FOR EASY DECONTAMINATION



EASE OF SERVICE



INDEPENDENT POWER SWITCH

Activate Power-Tech by Horton without turning ignition on

THE HORTON DIFFERENCE

All Horton ambulances come standard with the features you know and trust for strength and safety.



STRENGTH AND SAFETY



HOPS™ featuring MBrace™
The first ambulance patient compartment safety system that protects in both frontal impacts and rollover events.



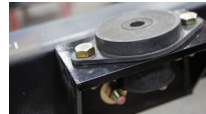
The Horton Legendary Body™
Engineered and constructed to deliver the ultimate in strength and safety.



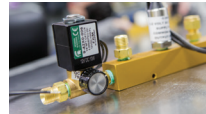
Tested Beyond the Limits
Designed and built to exceed industry testing standards.



Horton QuietGuard™
Exclusive sound deadening so crews can perform at their best.



Horton Vi-Tech™ Mounting System
Superior strength, ensuring body-to-frame integrity.



HO₂rton System™
Designed and tested to function virtually failure free.

DISTINCTION IN EVERY DETAIL

Horton Advanced Customization
You're the expert on your department's needs, and we're the experts at getting it done.

Horton Design Culture
You're investing in your future. We're driven to do more for you than most think possible.

Horton Distinctive Style
Safety, functionality and style aren't mutually exclusive, so you can make your Horton look as good as it performs.

ADDITIONAL FEATURES

COOL-TECH®
POWER-TECH BY HORTON™
HORTON 360™

DIRECTIONAL SAFETY LIGHTING
CUSTOM RUB-RAIL LIGHTS
CUSTOM BACKLIT FEATURES

CUSTOM GRAPHICS
CUSTOM INTERIOR

COMPREHENSIVE SUPPORT

Backed by our dealer network, the Horton team and REV Financial Services, we are ready as your first line of defense for your next purchase or when you need support.

Horton Dealer Network
One-of-a-kind ambulances demand our extraordinarily qualified service and support.

Horton Comprehensive Coverage
Our warranties deliver confidence and peace of mind.



Contact us at 1-800-282-5113 or scan to find your local dealer.
HORTONAMBULANCE.COM | INFO@HORTONAMBULANCE.COM

Horton
STRENGTH & SAFETY IN EVERY DETAIL™