

# HORTON i4G+™

TAKE COMMAND WITH COMPLETE CONTROL.

Horton's i4G+ electrical system is central command on every Horton ambulance, connecting to critical systems and vehicle diagnostics.

The i4G+ is an easy-to-use, simple design that connects to critical systems such as lighting, HVAC, the HO<sub>2</sub>rtion System™ and Horton 360™, as well as vehicle diagnostics for components like Cool-Tech®. The highly customizable system delivers flexibility and control features, with a programmable LCD touchscreen, to help save space on the front console and in the action area.

## ■ FULLY PROGRAMMABLE CONTROL

The i4G+ electrical system controls a number of functions, including:

- LOAD MANAGEMENT
- SEQUENCED START CIRCUIT ACTIVATION
- ELECTRICAL SYSTEM DIAGNOSTICS
- CLIMATE CONTROL HEAT/AC OPERATION
- INTENSITY CONTROLS FOR PATIENT DOME LIGHTS
- OXYGEN WARNING SYSTEM (HIGH AND LOW PRESSURE)
- ALL WARNING LIGHT FLASHERS AND FLASH PATTERNS
- PATIENT STATUS SYSTEM
- ADDITIONAL FEATURES AVAILABLE

## ■ FRONT CREW CONTROL

The front switch panels control the following items: Module Emergency Master, Interior Lights, Exterior Lights, Home, Settings and Maintenance. Additional options can be added.

## ■ REAR CREW CONTROL

The rear panel specifically controls patient care functions, including Oxygen, Vacuum, Interior Lighting, Climate Control, Ventilation, Timer/Stopwatch and Patient Status. You can also review Oxygen Line Pressure and Oxygen Cylinder Pressure.

## ■ DIAGNOSTICS

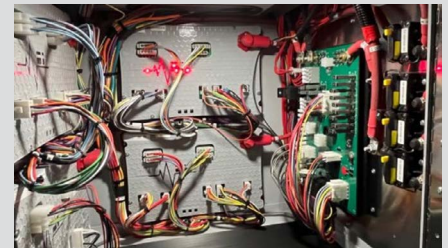
Diagnostics for this electrical system are state of the art, with a built-in capability to self-check each circuit and identify a short or open circuit automatically.

- ELECTRICAL DIAGNOSTICS
- USB PORT FOR FIELD UPGRADABILITY
- FRONT AND REAR PANELS ARE NOW INTERCHANGEABLE

## KEY ADVANTAGES



**DESIGNED FOR EASY DECONTAMINATION**



**EASE OF SERVICE**



**INDEPENDENT POWER SWITCH**

Activate i4G+ without turning ignition on

# THE HORTON DIFFERENCE

All Horton ambulances come standard with the features you know and trust for strength and safety.



## STRENGTH AND SAFETY



**HOPS™ featuring MBrace™**  
The first ambulance patient compartment safety system that protects in both frontal impacts and rollover events.



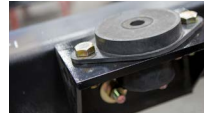
**The Horton Legendary Body™**  
Engineered and constructed to deliver the ultimate in strength and safety.



**Tested Beyond the Limits**  
Designed and built to exceed industry testing standards.



**Horton QuietGuard™**  
Exclusive sound deadening so crews can perform at their best.



**Horton Vi-Tech™ Mounting System**  
Superior strength, ensuring body-to-frame integrity.



**HO<sub>2</sub>rtion System™**  
Designed and tested to function virtually failure free.

## DISTINCTION IN EVERY DETAIL

**Horton Advanced Customization**  
You're the expert on your department's needs, and we're the experts at getting it done.

**Horton Design Culture**  
You're investing in your future. We're driven to do more for you than most think possible.

**Horton Distinctive Style**  
Safety, functionality and style aren't mutually exclusive, so you can make your Horton look as good as it performs.

## ADDITIONAL FEATURES

COOL-TECH®

DIRECTIONAL SAFETY LIGHTING

CUSTOM GRAPHICS

i4G+™

CUSTOM RUB-RAIL LIGHTS

CUSTOM INTERIOR

HORTON 360™

CUSTOM BACKLIT FEATURES

## COMPREHENSIVE SUPPORT

Backed by our dealer network, the Horton team and REV Financial Services, we are ready as your first line of defense for your next purchase or when you need support.

**Horton Dealer Network**  
One-of-a-kind ambulances demand our extraordinarily qualified service and support.

**Horton Comprehensive Coverage**  
Our warranties deliver confidence and peace of mind.



Contact us at 1-800-282-5113 or scan to find your local dealer  
[HORTONAMBULANCE.COM](http://HORTONAMBULANCE.COM) | [INFO@HORTONAMBULANCE.COM](mailto:INFO@HORTONAMBULANCE.COM)

**Horton**  
STRENGTH & SAFETY IN EVERY DETAIL™